

KMG PROJE

Engineering Consulting Information Technologies Ltd. Co.



KMG PROJECT
ENGINEERING CONSULTING
INFORMATION TECHNOLOGIES LTD. CO.

Founded : 2007

Adress : Kırçiçeği Str. 7/7
GOP/Çankaya/Ankara

Tel : +90 312 441 13 84 / 85

Fax : +90 312 441 13 42

E-Mail : kmgproje@kmgproje.com.tr

Company Partners : 2

Technical Staff : 25

Services:

• **Railway Projects:**

- High Speed Railway Projects, Conventional Railway Lines, Connection Lines Engineering Services (Geodetic, Soil Investigation, Geotechnical Services, Railway Alignment Design, Hydraulic-Hydrological Projects, Structural Design Services including Special Bridges, Viaducts and Tunnels, Preparation of Tender documents.)
- Subway, Light Rail System, Tramway lines, Engineering Services (Geodetic Services, Railway Routing Design, Soil Investigation, Geotechnical Services, Superstructure, Stations, Structural Design Services including Bridges, Viaducts and Tunnels, Electromechanical projects excluding signal and telecommunication.

• **Highway Projects:**

- State Roads, Urban Roads and Junction Projects Road Routing Design, Structural Design Services, Drainage Design Works.

• **Building and Social Facility Projects:**

- Architectural, Structural (Reinforced Concrete- Steel), Electrical and Mechanical Design Works.

• **Airport Projects:**

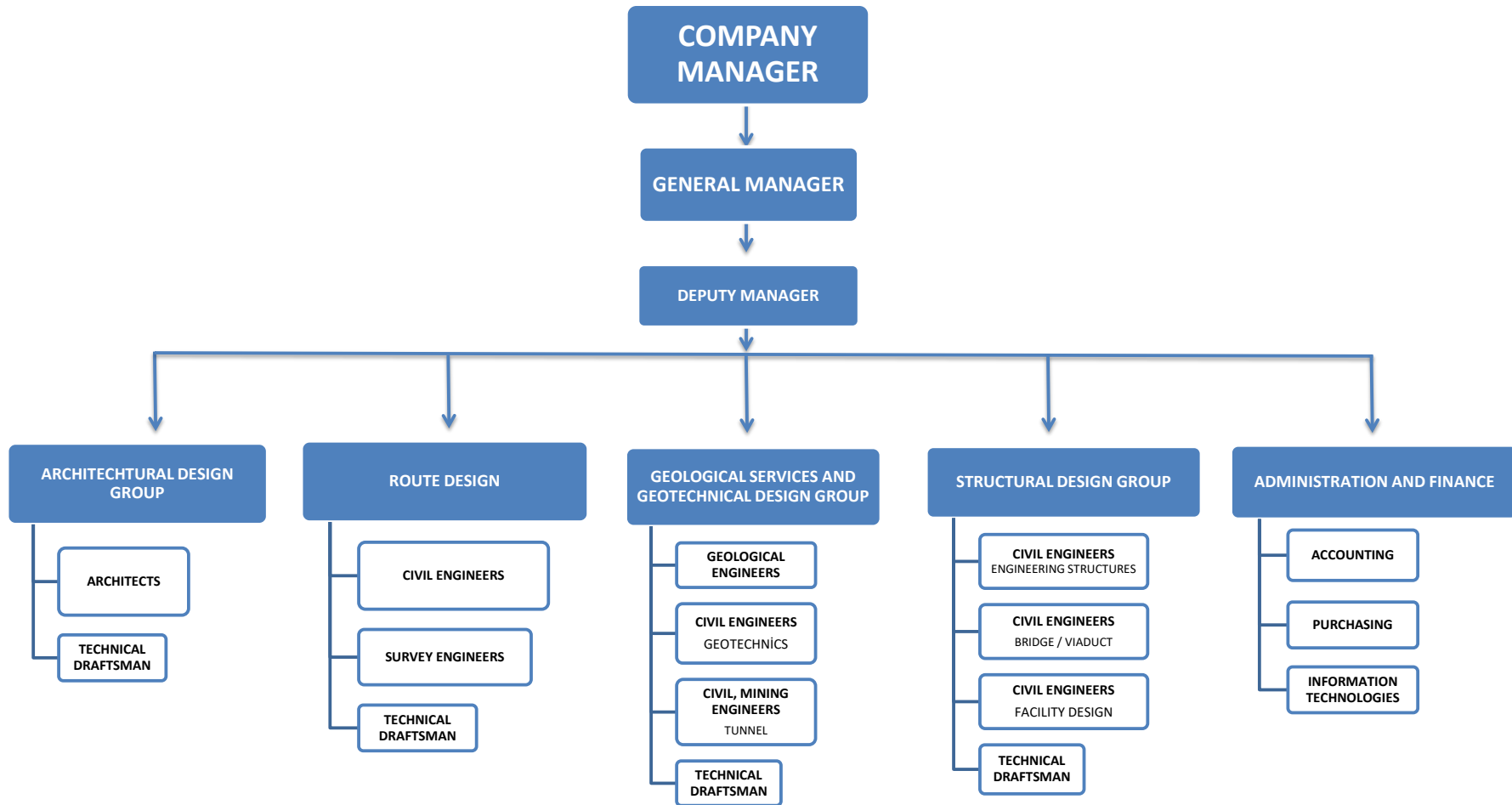
- Architectural, Structural (Reinforced Concrete- Steel), Electrical and Mechanical Design Works for Airport Related Structures.

ABOUT US

KMG Proje has been established on 2007 for the consultancy services and project studies of; highways, railways, high speed railways, metro systems, light rail transit systems and also, tunnels, under and over passes, bridges, viaducts, industrial structures, in accordance with national and international standards. Our company has accomplished numerous studies during his period of activity with high performance. KMG Proje has completed many domestic and international works. Our priority object is to;

- Hold the customers' pleasure at maximum without making any concession about quality
- Complete the works which are under our scope on time
- Follow the innovations and technology related to our professions and to improve our quality of works in our projects accordingly.
- Employ the technical persons who have satisfactory technical background and education
- Prepare the projects in accordance with national and international standards.
- Considering professional respect and responsibility; obtain same quality of works from our subcontractors.

Professional experiences in the construction sector, together with the young and dynamic technical team; with the light of; engineering ethic, science, and responsibility; our aim is to carry the experience within the construction sector towards the far future.



ON GOING PROJECTS

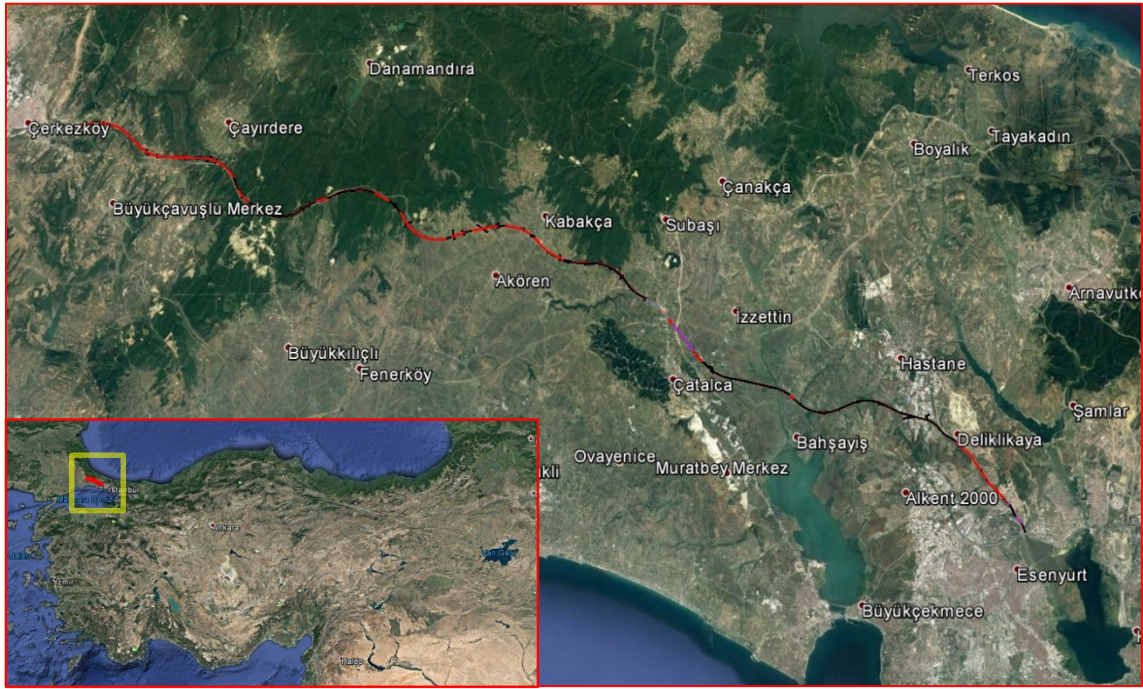


Projects Name: ULUKIŞLA – YENİCE DEMİRYOLU PROJECT ENGINEERING SERVICES

Client: THE STATE RAILWAYS of THE REPUBLIC of TURKEY (TCDD)

Main Contractor: TEMAT Tech. Eco. and Fin. Std. Inc. Partnership - KMG Project Eng. Cons. Inf. Tech. Ltd.– SUYAPI Eng. Cons. Inc. Partnership

Brief Description: **110 km line between Ulukışla -Yenice;** The selection of the route, performing Geological, Hydrogeological, Engineering Geology, Geotechnical, Hydraulic and Hydrological studies, Engineering Studies and Shop Drawings for the structures, Shop drawings for alignment infrastructure, superstructure projects.



Projects Name: ISPARTAKULE-CERKEZKOY RAILWAY LINE PROJECT IN THE SCOPE OF HALKALI – KAPIKULE NEW RAILWAY LINE CONSTRUCTION
(INFRASTRUCTURE, SUPERSTRUCTURE, ELECTROMECHANICAL ENGINEERING SERVICES)

Client: THE STATE RAILWAYS of THE REPUBLIC of TURKEY (TCDD)

Main Contractor: KMG Project Eng. Cons. Inf. Tech. Ltd.– SUYAPI Eng. Cons. Inc. Partnership

Brief Description: 68 km line between Ispartakule - Çerkezköy; The selection of the route, performing Geological, Hydrogeological, Engineering Geology, Geotechnical, Hydraulic and Hydrological studies, Engineering Studies and Shop Drawings for the structures, Shop drawings for alignment infrastructure, superstructure and electromechanical projects.



Projects Name: MERZIFON-SAMSUN RAILWAY PROJECT (INFRASTRUCTURE, SUPERSTRUCTURE, ELECTROMECHANICAL) IN THE SCOPE OF PREPARATION OF SAMSUN – ÇORUM - KIRIKKALE RAILWAY PROJECTS

Client: THE STATE RAILWAYS of THE REPUBLIC of TURKEY (TCDD)

Main Contractor: KMG Project Eng. Cons. Inf. Tech. Ltd.– SUYAPI Eng. Cons. Inc. Partnership

Brief Description: **95 km Line between Merzifon-Samsun;** The selection of the route, performing Geological, Hydrogeological, Engineering Geology, Geotechnical, Hydraulic and Hydrological studies, Engineering Studies and Shop Drawings for the structures, Shop drawings for alignment infrastructure, superstructure and electromechanical projects.

COMPLETED PROJECTS



**MSS (Movable Scaffolding System)
and
The longest High Speed Railway Viaducts of Turkey**

Projects Name: ANKARA-SİVAS RAILWAY KAYAŞ- KIRIKKALE VIADUCTS V7-V9-V10-V15

Client: The State Railways of the Republic of Turkey (TCDD)

Main-Contractor: Doğu Construction and Trade Inc.

Sub-Contractor: KMG Project Eng. Cons. Inf. Tech. Ltd.

Date of Contract: 31.07.2014

Scope of Services:

- | | | |
|---------------|------------------|--|
| 1. Viyadük-7 | Length: 1.800 m, | # of Axes: 35, Max. Column Height: 53,90 m |
| 2. Viyadük-9 | Length: 1.438 m, | # of Axes: 26, Max. Column Height: 43,65 m |
| 3. Viyadük-10 | Length: 1.541 m, | # of Axes: 22, Max. Column Height: 88,60 m |
| 4. Viyadük-15 | Length: 1.437 m, | # of Axes: 23, Max. Column Height: 64,50 m |
- (Maximum span length on each viaduct is 90m)
Total Viaduct Length of four viaducts 6.216 m



Projects Name: KARAMAN HIGH SPEED RAILWAY STATION PROJECT

Client: The State Railways of the Republic of Turkey (TCDD)

Main Contractor: KMG Project Eng. Cons. Inf. Tech. Ltd.

Scope of Services: Including preparation of structural, architectural, mechanical, electrical, landscaping detail design and shop drawings for The High Speed Railway Station Building and related facilities. Preparation of Tender Documents, Bill of Quantities, Technical Specifications, 3D views, animations and mock-up are also in the scope of the project.



Projects Name: IMPLEMENTATION OF SECOND RAILWAY LINE BETWEEN AKÇAKALE - NUSAYBİN (226 KM) STATION

Client: TCDD 6. REGIONAL DIRECTORATES – ADANA

Main Contractor: KMG Project Eng. Cons. Inf. Tech. Ltd.

Scope of Services: Surveying Works for 226 km, Route Study for 160 km/h and 200 km/h speed, Preparation of Alignment Projects scaled to 1/2000, hydrological study, geological and geotechnical studies, structural design works, Environmental Impact Assessment Report, Land Expropriation Plans for 3 km and Bill of Quantities.



Projects Name: İZMİR LIGHT RAIL SYSTEM PROJECT 2. PHASE
IMPLEMENTATION

Client: İZMİR METROPOLITAN MUNICIPALITY SECTION OF RAIL
SYSTEM

Main Contractor: SİGMA – BOREGE Partnership

Sub-Contractor: KMG Project Eng. Cons. Inf. Tech. Ltd.

Scope of Services: Preparation of the projects for Goztepe, Poligon and Fahrettin Altay stations, tunnel and shafts. Poligon and Fahrettin Altay are designed based on the Top-Down method with diaphragm walls. Station projects, Geotechnical design works, structural design works, architectural design works, electrical and mechanical design works are performed in the scope of the project.



Projects Name: SAMSUN LIGHT RAIL SYSTEM PROJECT

Client: SAMSUN METROPOLITAN MUNICIPALITY SECTION OF RAIL SYSTEM

Main Contractor: ALSİM ALARKO IND. FAC. TRD. INC.

Sub-Contractor: KMG Project Eng. Cons. Inf. Tech. Ltd.

Scope Of Services: 15.6 km railway line surveying works, alignment preliminary and detail design works, construction projects, geological and boring studies for structures, laboratory works, geotechnical reports, hydrological studies, drainage projects, store area railway line projects, maintenance areas construction projects, 21 shallow stations projects, energy supply and transformer projects, bridge design projects (L=230m, L=100m, L=100m), retained cut and fill projects for cut and cover tunnel structure, electrical and mechanical construction projects.



Projects Name: BARTIN-AMASRA-CİDE-ABANA- SİNOP
(Between Bartın- Çakraz and including Amasra
Connection)
State Road Engineering Services

Client: GENERAL DIRECTORATE OF HIGHWAYS

Main Contractor: ÇELİKLER COM. CONS. and IND. INC.

Contractor: KMG Project Eng. Cons. Inf. Tech. Ltd.

Scope of Services: Route study, surveying works, alignment construction projects (including junctions), geological studies, 2 viaducts implementation projects, 1 roadway tunnel construction project, geotechnical design works.



Projects Name: ORDU - GİRESUN AIRPORT SUPERSTRUCTURE FACILITIES PREPARATION CONSTRUCTION PROJECTS and TENDER DOCUMENTS

Client: MINISTRY OF TRANSPORT AND INFRASTRUCTURE, GENERAL DIRECTORATE OF INFRASTRUCTURE INVESTMENTS

Main Contractor: KMG Project Eng. Cons. Inf. Tech. Ltd.

Scope Of Services: Basic Design, Detail Design and Construction projects for the construction of 47983.98 m2 area including quantities, bill of quantities, general technical specification, particular technical specification, construction projects for the roads in and out of the land, parking areas, entrance areas, installation galleries, clean and waste water systems, irrigation, rain water, fire protection water system, heating and cooling systems, onshore and offshore boring studies, geological and geotechnical studies, distribution network projects excluding low voltage (telecommunication, data and fire detection).

KMG PROJECT

Completed Projects

NO	Project Name
1	Preliminary Design for updating to 3 Line Gebze – Köseköy Railway
2	Uzayçağı Street Overpass Project
3	Land Drainage of Samsun Gelemen Logistic Department
4	Relocation of Erzincan Eriç HEPP and Dams Railway Engineering Works
5	Eskişehir High Speed Railway Station Transition Project
6	Redesign of Tandoğan – Keçiören Metro Line Municipality Station
7	Zonguldak Railway Junction Line
8	Çimentaş-Edirne Cement Factory Junction Line Alignment Projects
9	Celal Bayar Boulevard – Etimesgut Armoured Division Connection Road and Interchange Revised Construction Project
10	Bakü-Tiflis-Kars Railway Project Turkey Georgia Border Tunnel Project Consultancy Services
11	Sandıklı-Karakuyu-Dazkırı (115 KM) and Dazkırı-Denizli (90 km) Railway Renewing Project
12	Bakü-Tiflis-Kars Railway Project Senger Alternative Tunnel Project
13	KOSBİ Batıçim Railway Junction Line Project and Engineering Services
14	Ordu-Giresun Airport Project
15	Samsun Light Rail Project Engineering Services
16	Turkmenbashi – Farap I. Class Highways Engineering and Tender Management Services
17	Kadıköy-Kartal Metro Line Alignment Project and Consultancy Services
18	Bodrum Yalıkavak Tourist Facility Engineering Services
19	Ankara-Konya (Polatlı-Konya) Railway (200 Km) Project and Engineering Services
20	Marmaray CR-1 Store Areas (Gebze, Halkalı ve Maltepe) Project and Engineering Services
21	Eskişehir – Köseköy Railway Project and Engineering Services
22	Taksim – Yenikapı Istanbul Metro Line Project and Engineering Services
23	Adana Light Rail System Project and Engineering Services
24	Taksim – 4 Levent Istanbul Metro Line Project and Engineering Services
25	Çan - Biga Road Project and Engineering Services
26	Hanlı - Bostankaya Double Line Railway Second Phase Project and Engineering Services
27	Zonguldak - K.Ereğlisi Railway Project and Engineering Services

KMG PROJE

Engineering Consulting Information Technologies Ltd. Co.

Kırıeđi Str. 7/7
GOP/ankaya/Ankara
Tel: +90 312 441 13 84
Fax: +90 312 441 13 42

e-mail: kmgproje@kmgproje.com.tr
www.kmgproje.com.tr